



TableBed Packaging Photos





Box 1

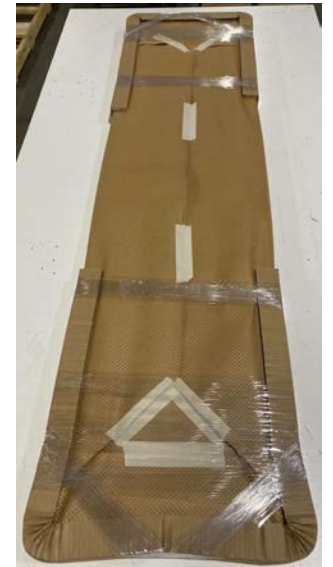
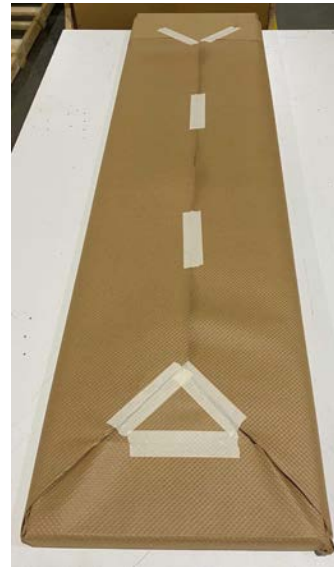
(Bundles 1 – 7)





Bundle 1

(Left & Right Cabinet Sides)





Bundle 2

(Cabinet Top/SubTop, Shelf, Valence, Cabinet Back)





Bundle 3

(Cabinet Bottom, Headboard, Headrail)





Bundle 4

(Cabinet Front, Flipper, Footrail)





Bundle 5

(Footrest, Angle Iron)





Bundle 6

(Left & Right Side Rails)





Bundle 7

(Small Hardware, Handles, Strut Plate, Backing Plate, Instruction Manual, Thank You Card, Garbage Bag)





Box 2

(Left & Right Bed Panels)





Box 3

(Table Top, Leg Assembly)

